



GAT MONTHLY MEMBERSHIP PROGRESS REPORT

Results as of: 8/31/2023

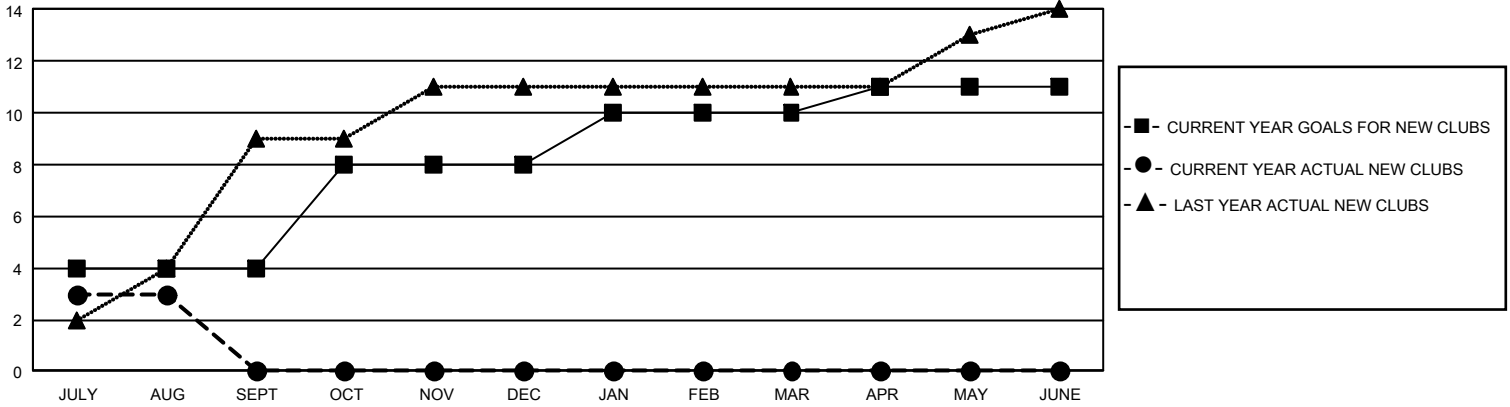
GMT Constitutional Area 5 - E, Group P

REPORT DOES NOT INCLUDE CLUBS IN UNDISTRICTED AREAS.

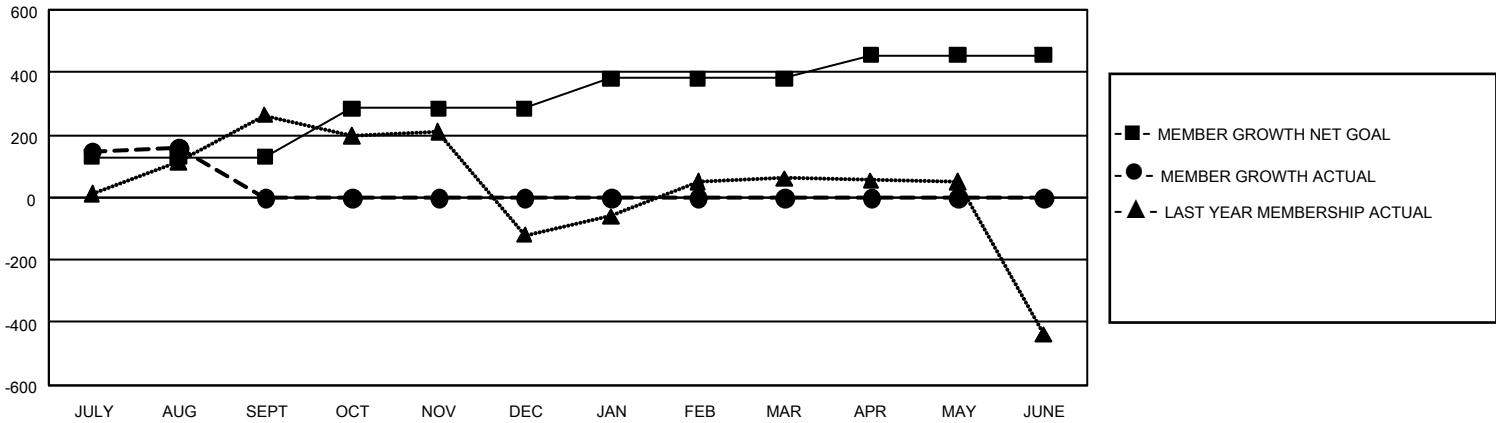
Clubs			
RESULTS FOR 2023-2024			
QUARTER	NEW CLUB GOAL	NEW CLUBS	DROPPED CLUBS
JULY/AUG/SEPT	12	3	3
OCT/NOV/DEC	12	0	0
JAN/FEB/MAR	6	0	0
APR/MAY/JUNE	3	0	0

Members			
RESULTS FOR 2023-2024			
QUARTER	MEMBER GROWTH NET GOAL	MEMBER GROWTH ACTUAL	DROPPED MEMBERS ACTUAL (including transfers)
JULY/AUG/SEPT	130	267	92
OCT/NOV/DEC	155	0	0
JAN/FEB/MAR	95	0	0
APR/MAY/JUNE	75	0	0

GOALS AND ACTUAL NEW CLUBS CUMULATIVE



GOALS AND ACTUAL MEMBERS CUMULATIVE



DROPPED CLUBS: 3	60 CLUBS OF 307 ADDED 1 OR MORE NEW MEMBERS	GENDER DISTRIBUTION	
		MALE 3,370 (47.81%) FEMALE 3,679 (52.19%) NON BINARY 0 (0.00%) PREFER NOT TO ANSWER 0 (0.00%)	
DROPPED MEMBERS		CLICK HERE FOR CUMULATIVE MEMBERSHIP DATA	TOTAL FAMILY UNIT MEMBERS 570
DECEASED 3 CLUB CANCELLED 0 OTHER 89 TOTAL 92			FAMILY MEMBERS PAYING HALF DUES 304